

---

Kiersted Systems  
Electronic Discovery Services



Getting Connected – Kiersted Citrix Guide

**KIERSTED / SYSTEMS**

1301 Fannin, Suite 750

Houston, Texas 77002

[www.kiersted.com](http://www.kiersted.com)

**CONNECTING TO THE SYSTEM ..... 3**  
**DOWNLOADING AND INSTALLING THE CITRIX ICA CLIENT ..... 3**  
**RESETTING YOUR PASSWORD ..... 5**  
**SELECTING A PROJECT ..... 5**

## Connecting to the system

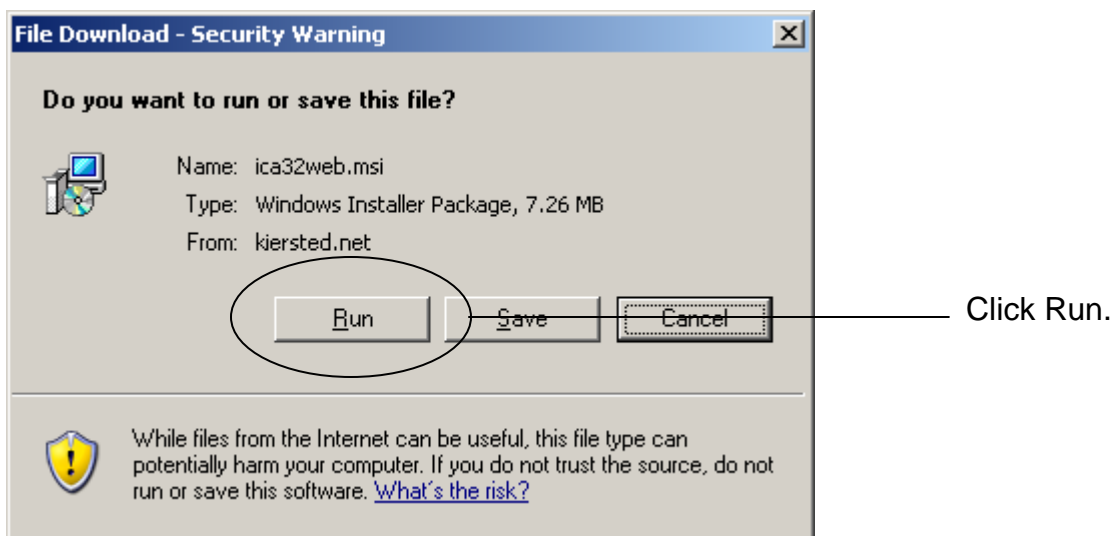
Using Internet Explorer, open the website <http://www.kiersted.net>

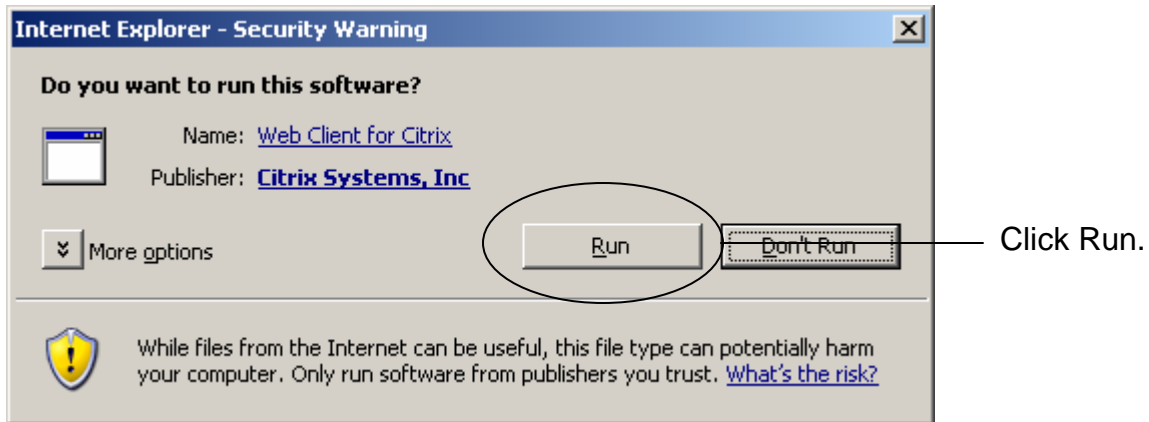
### Citrix

- [Link to Citrix Login](#)
- [Kiersted Systems Citrix Manual](#)
- [Download Citrix Web Client](#)
- [Link to all Citrix ICA Clients](#)

## Downloading and Installing the Citrix ICA Client

If you do not already have the Citrix web client installed, just browse to the website above and click the [Download Citrix Web Client](#) link to download the Citrix ICA client.

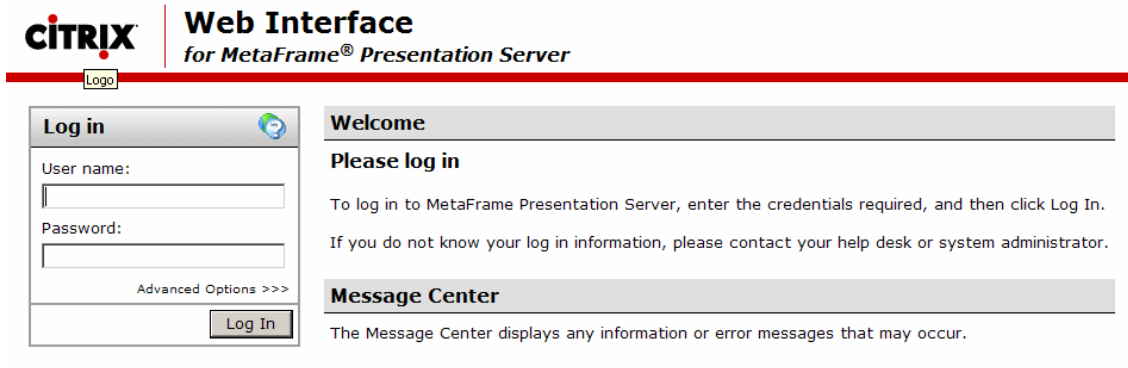




Complete the installation, then close and re-open Internet Explorer.

Return to <http://www.kiersted.net>

Click on the [Link to Citrix Login](#)



## Resetting your Password

The first time you log in, you will be prompted to reset your password.

Passwords must meet the following criteria:

- At least 7 characters in length
- Contain at least one uppercase letter
- Contain at least one lowercase letter
- Contain at least one number
- May not contain your User ID or name

## Selecting a Project

Single click the appropriate review project icon and the application will launch.

